

Valencia Retractable Patio Awning Installation Instructions

Unpack and review parts. Note the locations of the lateral arms on the square torsion bar.



Mark holes for wall brackets. Wall anchors (screws) must be driven into structural framing members, such as studs. Use the studs closest to where the lateral arms are attached to the square bar.

Note that the nut groove on the bracket should face upward (see below).



Attach the first wall bracket with two anchor screws with washers. It is the responsibility of the installer to use wall anchors appropriate for the siding and wall construction and drive them to a sufficient depth into structural elements of the building.



Tighten the screws.



Proceed to install remaining wall brackets. The number of brackets depends on the width of your awning. Make sure that the brackets are installed on the same level and square to the ground.



Lift the awning and insert the square bar into the brackets. You will need one or more helpers, depending on the size and weight of your awning. Secure the square bar in each bracket with the included bolt and nut. The bolt is inserted from the bottom, the nut goes on top. Tighten the bolt.



Attach the hand crank eye and secure it with the cotter pin.



Remove packaging straps and Styrofoam blocks.



Hook the hand crank unto the hand crank eye. If your awning is equipped with a motor, plug the motor cord into a grounded outlet.

Operate the awning with the hand crank or remote control. If your awning is equipped with a motor, adjust the motor limits as necessary (see instructions below).



This concludes the awning installation procedure.

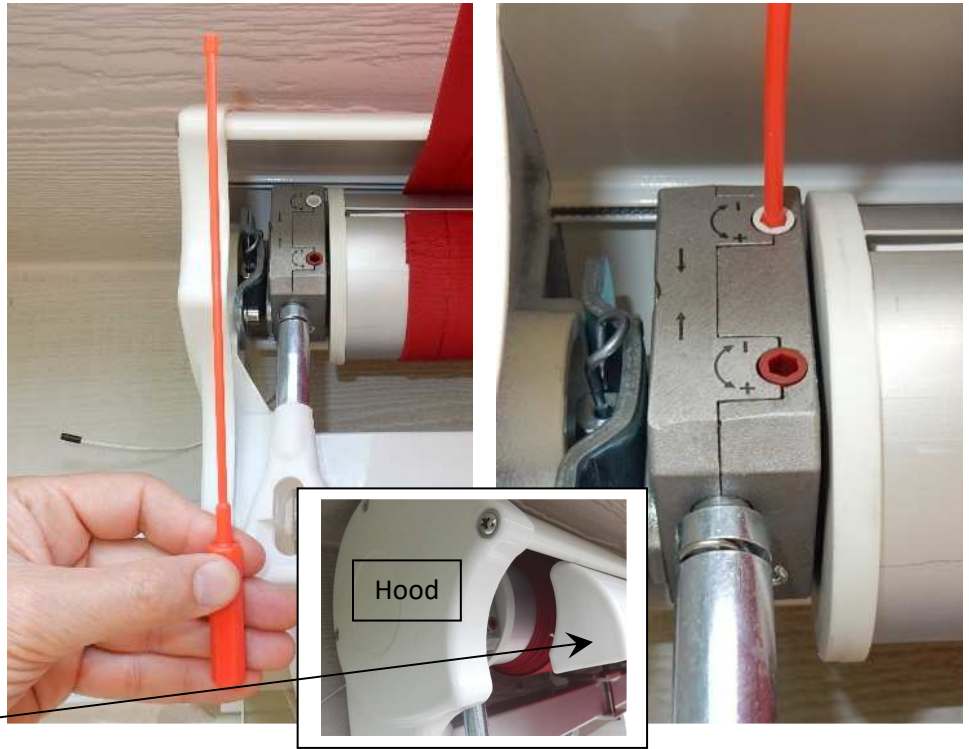


Motor Adjustment

Use the included tool shown below to adjust the awning extension and retraction limits if necessary:

The adjustment screw with an arrow pointing down sets the awning extension limit. Turn it in the "+" direction to increase the awning extension and in the "-" direction to decrease the awning extension.

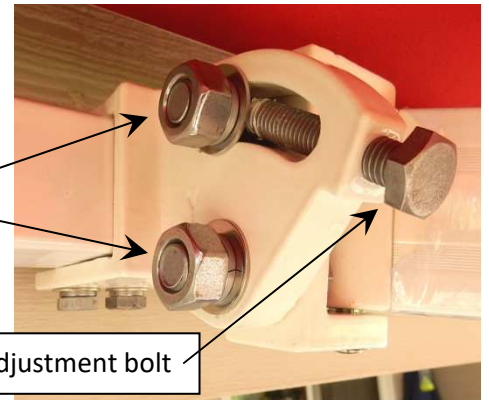
The adjustment screw with an arrow pointing up sets the awning retraction limit. Turn it in the "+" direction to have the awning retract closer to the wall and in the "-" direction to stop farther from the wall. The awning should stop as soon as the front bar comes in contact with or goes under the hood. The motor must stop running.



Awning Slope Adjustment

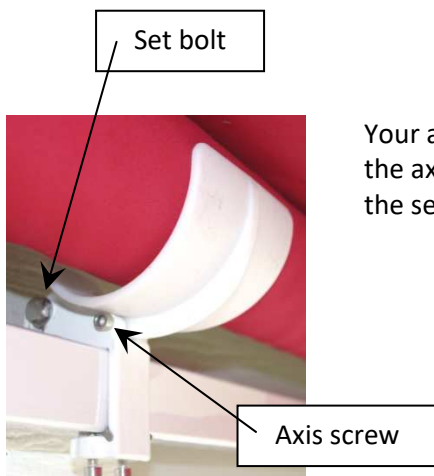
To adjust the awning slope, loosen the top and bottom nuts on the lateral arm bracket. To raise the awning's front bar and reduce the slope, turn the adjustment bolt clockwise. To lower the awning's front bar and increase the slope, turn the adjustment bolt counterclockwise. Tighten the top and bottom nuts.

Top and bottom nuts



Center Cradle Adjustment

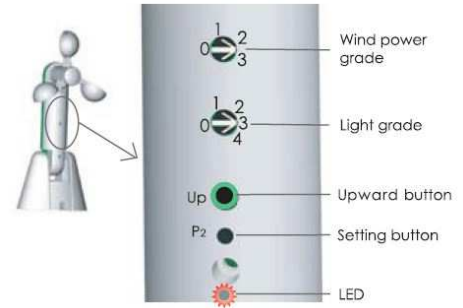
Your awning may come with a center cradle. To adjust the cradle, if necessary, loosen the axis screw and set bolt, rotate the cradle around the axis screw, then tighten both the set bolt and axis screw.



DC116 Wind-Sun Sensor Programming and Installation Instructions

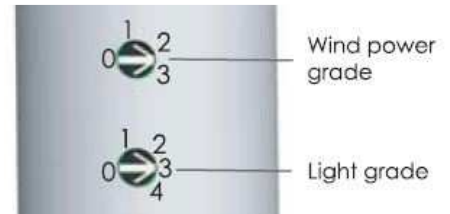
Sensor Programming

1. Plug the wind-sun sensor into a grounded outlet. Set both adjustment dials to a value other than 0.
2. Extend the awning to approximately 1/2 of its full extension.
3. Press the Up button on the remote control to start retracting the awning.
4. Within 6 seconds, press the P2 button on the remote control (in the battery compartment) two times.
5. Within 6 seconds, press the P2 button on the wind-sun sensor once. The sensor is now paired to the awning's motor.
6. Test the pairing by pushing the Up button on the sensor. The awning should retract.



Sensor Adjustment

Set the wind sensor adjustment dial to a position between 1 (10 mph wind) and 3 (30 mph wind), and the sun sensor dial to a position between 1 (15 klx) and 4 (60 klx). To disable the wind or sun sensor function, set the respective dial to 0.



Sensor Installation

Remove the two sensor base covers . Using the included screws, install the wind-sun sensor within a few feet from the awning in an area, where the wind speed and amount of sunlight would be approximately the same as they would be for the awning. Reinstall the two base covers.

Plug the sensor into a grounded outlet.

Installation positions

